

RNAV STANDARD DEPARTURES CHART(SID)-ICAO

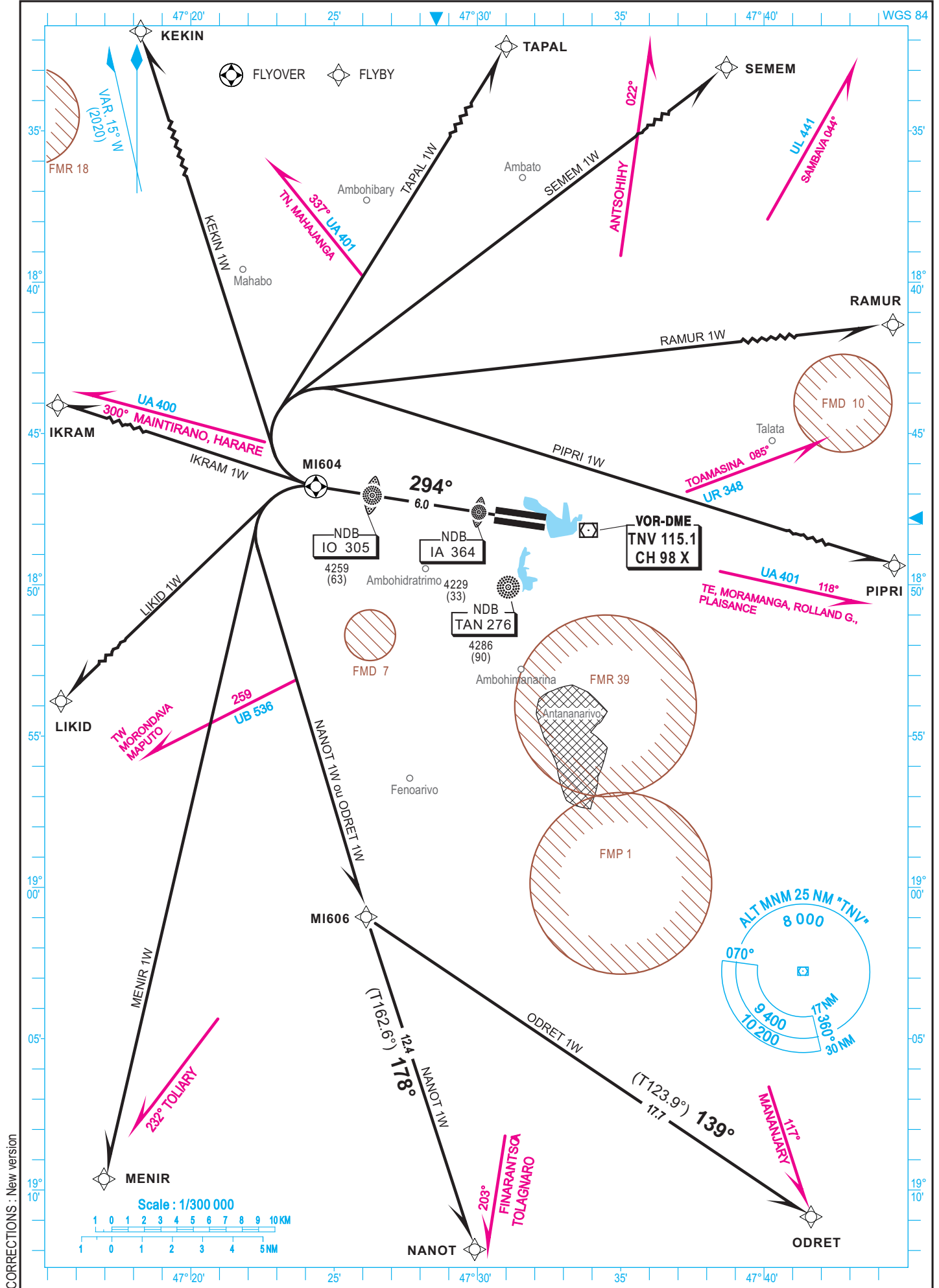
TRANSITION ALTITUDE
8000 FT

APP 125.7
TWR 120.1

ANTANANARIVO -Ivato (FMMI)

RWY 29

IKRAM 1W-KEKIN 1W-TAPAL 1W-SEMEM 1W-RAMUR 1W-PIPRI 1W-ODRET 1W-NANOT 1W-MENIR 1W-LIKID 1W



CORRECTIONS : New version